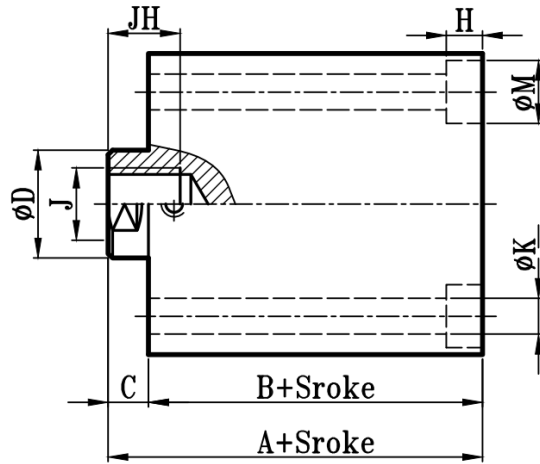
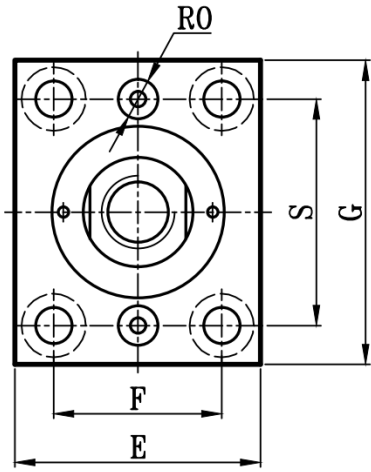
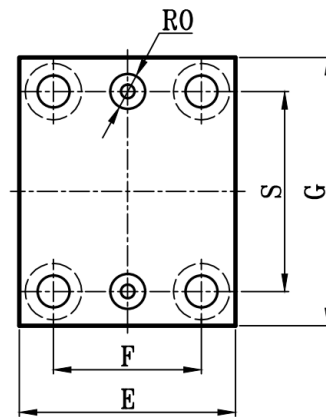
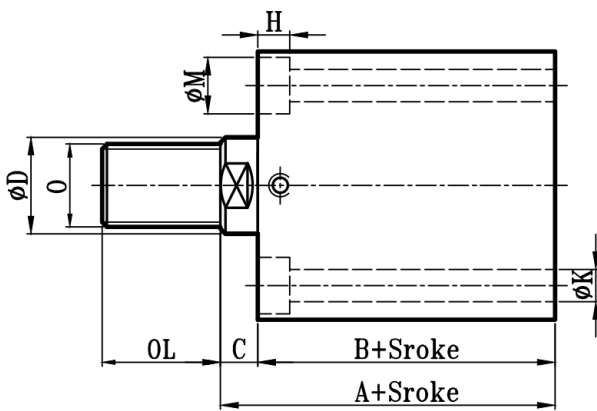


JOR:JOR+C(长方形)+A(前油口)+(内牙)

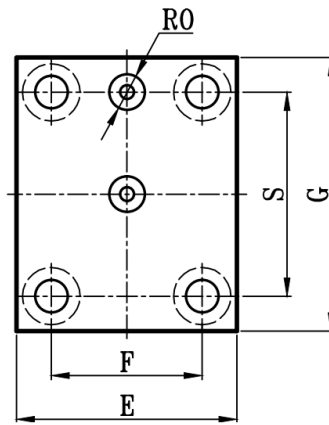
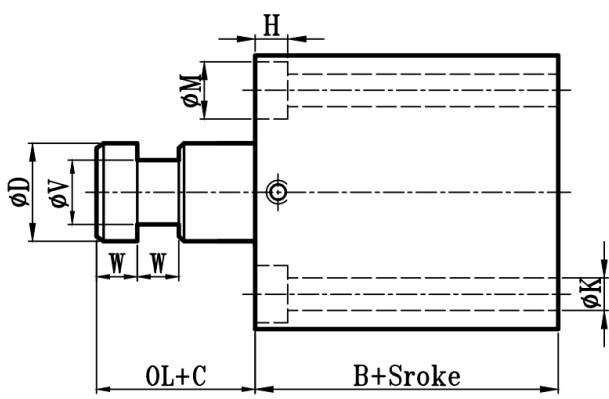
油路板型单轴油压缸尺寸图 14Mpa Series Dimensional Features



JOR:JOR+C(长方形)+D(后油门)+(内牙)



JOR:JOR+C(长方形)+B(后油门)+(内牙)



缸径 BORE	JOR-C												I(内牙型)		E(外牙型)			H型槽	
	A	B	C	ΦD	E	F	S	G	ΦK	ΦM	H	RO	J	JH	O	OL	W	ΦV	
Φ16	49	41	8	10	40	26.5	38	56	6	9.5	6	Φ8深1.3	M6xP1	15	M8xP1.25	15	8	5	
Φ20	52	44	8	12	45	30	42	60	6	9.5	6	Φ8深1.3	M8xP1.25	15	M10xP1.25	15	10	7	
Φ25	53	45	8	14	50	36	50	67	6	9.5	6	Φ10深1.3	M10xP1.5	15	M12xP1.5	20	10	9	
Φ32	64	54	10	20	62	47	60	78	7	11	7	Φ12深1.3	M12xP1.75	20	M16xP1.5	25	15	14	
Φ40	65	55	10	25	70	52	66	84	9	14	9	Φ12深1.3	M16xP2.0	20	M22xP1.5	30	15	18	
Φ50	71	60	11	30	80	58	76	98	11	17	11	Φ12深1.3	M20xP2.5	25	M26xP1.5	35	15	23	
Φ63	80	67	13	35	94	69	92	117	14	20	13	Φ12深1.3	M24xP3.0	30	M30xP1.5	40	15	27	
Φ80	95	78	17	40	114	86	112	140	16	23	15	Φ15深1.7	M27xP3.0	35	M36xP1.5	45	20	32	
Φ100	99	82	17	50	134	102	132	164	18	26	17	Φ15深1.7	M36xP4.0	40	M40xP2.0	50	20	40	
Φ125	115	95	20	60	164	124	162	202	22	32	21	Φ19深1.7	M45xP4.5	45	M50xP2.0	55	20	50	
Φ150	121	101	20	80	194	146	187	235	26	38	25	Φ19深1.7	M60xP5.5	45	M70xP2.0	60	25	70	
Φ180	134	109	25	100	224	171	217	270	29	42	28	Φ19深1.7	M75xP6.0	50	M90xP2.0	65	25	85	
Φ200	144	119	25	120	246	188	237	295	32	47	31	Φ19深1.7	M95xP6.0	50	M100xP3.0	70	25	100	