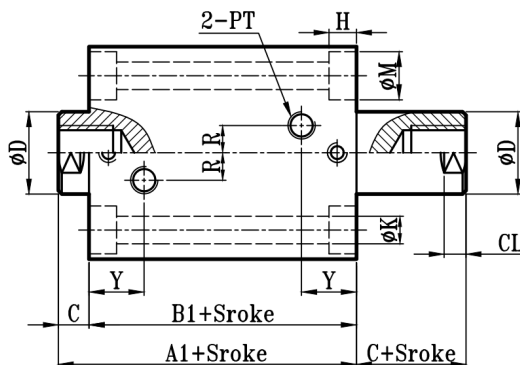
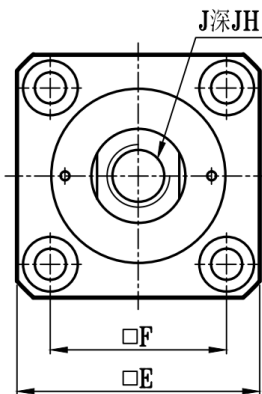
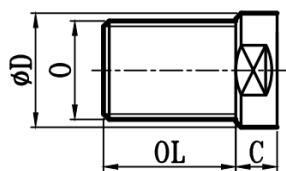


JOD:JOD+S(方型)+(内牙)

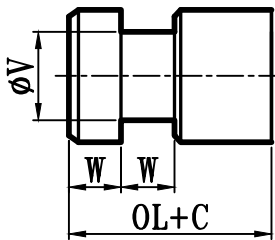
薄型双轴(可调)油压缸尺寸图 14Mpa Series Dimensional Features



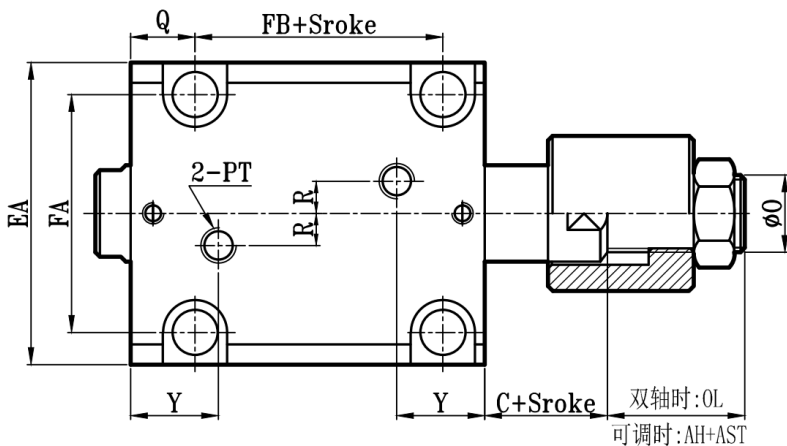
E:外牙型



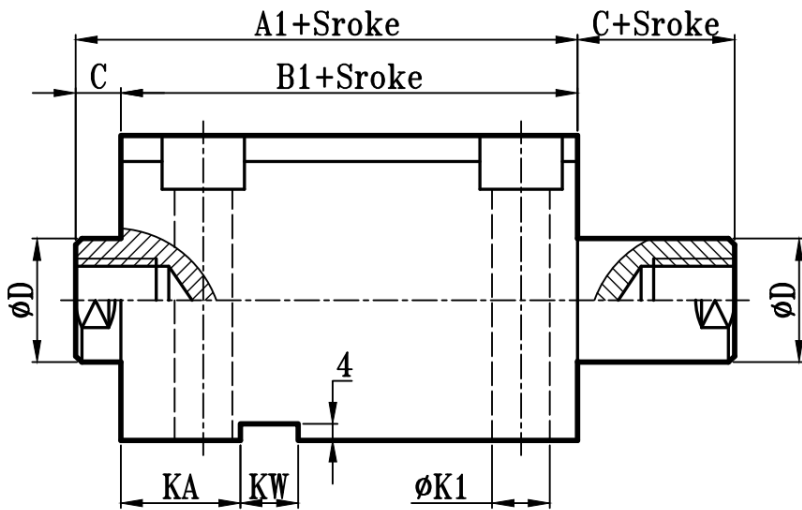
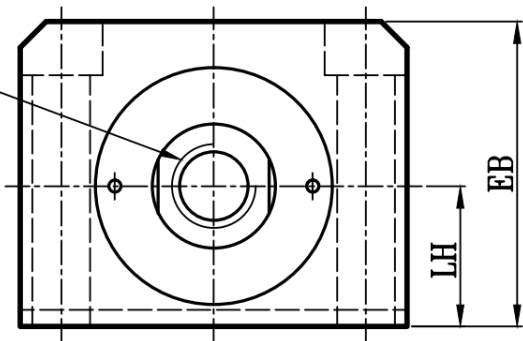
JOD:JOD+L(扁型)+(可调)



S/L/C共用



J深JH



缸径 BORE	JOB																				I内牙型		E外牙型		H槽			
	A1	B1	C	φD	EA	FA	EB	LH	Q	FB	φK1	KA	KW	E	F	φK	φM	H	R	Y	PT	AH	J	JH	O	OL	W	φV
φ16	61	53	8	10	44	33	36	16	20	13	6	25	8	40	26.5	6	9.5	6	0	19	1/8	18	M6xP1	15	M8xP1.25	15	8	5
φ20	65	57	8	12	50	38	41	18	20	15	7	25	8	45	30	6	9.5	6	0	20	1/8	22	M8xP1.25	15	M10xP1.25	15	10	7
φ25	66	58	8	14	55	43	46	21	20	17	7	26	8	50	36	6	9.5	6	5	21	1/8	22	M10xP1.5	15	M12xP1.25	20	10	9
φ32	78.5	68.5	10	20	70	56	56	25	20	24	9	28	12	62	47	7	11	7	10	25	1/4	29	M12xP1.75	20	M16xP1.5	25	15	14
φ40	79.5	69.5	10	25	80	62	64	29	20	23	11	28	12	70	52	9	14	9	10	25	1/4	32	M16xP2.0	20	M22xP1.5	30	15	18
φ50	86	75	11	30	94	74	74	34	20	27	13	29	14	80	58	11	17	11	10	27	1/4	39	M20xP2.5	25	M26xP1.5	35	15	23
φ63	96	83	13	35	114	90	89	42	20	32	16	31	16	94	69	14	20	13	10	30	3/8	40	M24xP3.0	30	M30xP1.5	40	15	27
φ80	111	94	17	40	134	110	109	52	20	41	16	34	16	114	86	16	23	15	15	32	3/8	48	M27xP3.0	35	M36xP1.5	45	20	32
φ100	117	100	17	50	160	134	129	62	20	44	18	34	16	134	102	18	26	17	15	34	3/8	50	M36xP4.0	40	M40xP2.0	50	20	40
φ125	136	116	20	60	195	163	158	76	30	44	22	44	20	164	124	22	32	21	20	39	1/2	60	M45xP4.5	45	M50xP2.0	55	20	50
φ150	142	122	20	80	230	192	186	89	30	47	26	46	20	194	146	26	38	25	20	42	1/2	60	M60xP5.5	45	M70xP2.0	60	25	70
φ180	156	131	25	100	270	228	216	104	30	53	29	49	20	224	171	29	42	28	20	45	1/2	65	M75xP6.0	50	M90xP2.0	65	25	85
φ200	166	141	25	120	300	252	237	114	30	60	32	51	20	246	188	32	47	31	20	47	1/2	75	M95xP6.0	50	M100xP3.0	70	25	100

备注: AST为客户指定之可调行程